

# ClearShield



---

## Hi-Impact Extreme Protection

Designed for applications requiring specification, built to significantly exceed the minimum required under the standards, the ClearShield Extreme Range is a specialist product that far exceeds any standard testing criteria for a security product.

### Specific Solution Testing

As a Solution Provider, ClearShield is happy to develop and test any product that we think is feasible and fits within our product range. We have already performed several tests to prove compliancy to specific requirements of several projects, at our cost. Contact us for a confidential discussion about your needs today.

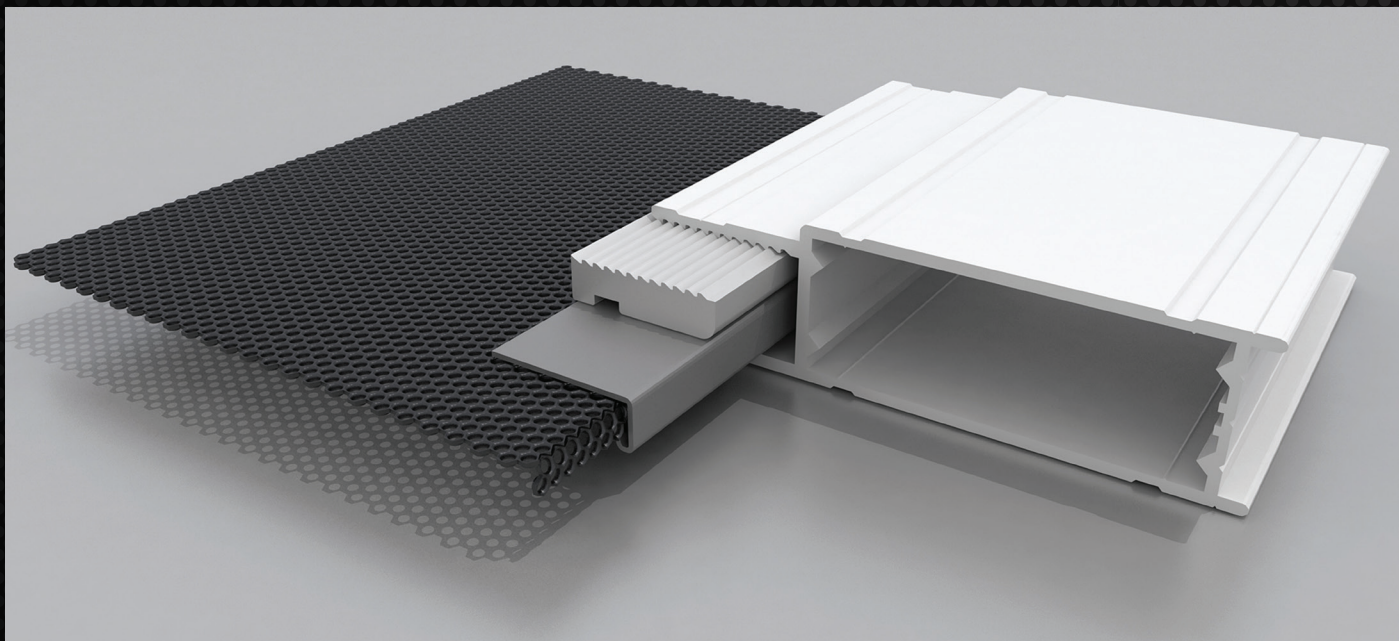
### Extreme Strength

With the advent of the increased Cyclonic Impact requirements in the revised AS/NZS 1170.2-2011 Standard, ClearShield developed products to meet those requirements. In doing so, some of the new enhanced features were transposed into our commercial product range to provide an unprecedented level of strength and protection. These products are currently being used in, and specified for, Department of Corrective Services projects, providing actual barrier protection against physical attacks from violent criminals. To say that the ClearShield product performs adequately is an understatement.

**ClearShield**  
STAINLESS STEEL SECURITY



[clearshield.com.au](http://clearshield.com.au)



## Technical Data

### Aluminium Framing

Grade:	6063 – T6
Coating:	Anodised – min 15um to AS1213-2000 Powdercoating – Chromate Pre-treatment and powdercoated to AS3715-2002
Warranty:	As per Coating Selection
Features:	Thicker frame walls and design features that enhance the frames ability to withstand forces far exceeding the original design requirements

### Stainless Steel Sheet

Grade:	T304-2b Finish
Finish:	Satin Black Powder Coated
Open Area:	1.5mm – 29%-31%
Warranty:	15 Years, subject to adhering to the recommended cleaning schedule
Coating:	Powdercoating – Oxsilane Chrome Free Pre-treatment and powdercoated to AS3715-2002
Dimensions:	Ø 2mm Round Holes, 60° Staggered Pitch, 3.5mm Spacings, 1.5mm Thick
Or:	Ø 3mm Round Holes, 60° Staggered Pitch, 5mm Spacings, 1.5mm Thick

## Testing

Date	Report #	Description of Test	SS Used	Result
01/03/2017	AZT0026.17	Impact to AS/NZS 1170.2 @ 36m/s on US Door	1.5mm	Pass
27/06/2014	AZTP46.14	Impact to AS/NZS 1170.2 @ 40m/s on US Door	1.5mm	Pass
01/06/2010	2010020/2	AS5041 Impact test @ 5 Times (500J) the impact load	1.5mm	15 Impacts*
15/09/2017	AZT0328.17	Static Load test to Simulate 5000 Newtons @ Centre of Screen	1.5mm	510kg Pass
12/12/2016	AZT0026.17	AS/NZS 1170.2 Impact Test on US Door Frame	1.5mm	36m/s

\*Note: This test was stopped due to the test rig failing before the door failed.