

# ClearShield

## Perforated Security Products

ClearShield is a single sheet of stainless steel with holes punched via a 600 ton press. When compared with other woven wire or aluminium sheet products on the market, ClearShield excels in being very low maintenance with a very high aesthetic appeal. A modern looking, stylish frame encompasses a smooth, perforated sheet which serves to complement building design. ClearShield commercial grade products also use ClearShield's beautifully designed framing, further enhancing the aesthetics whilst maintaining superior strength. All these design features have led to ClearShield being awarded two Good Design awards, making ClearShield your preferred choice on your next project.

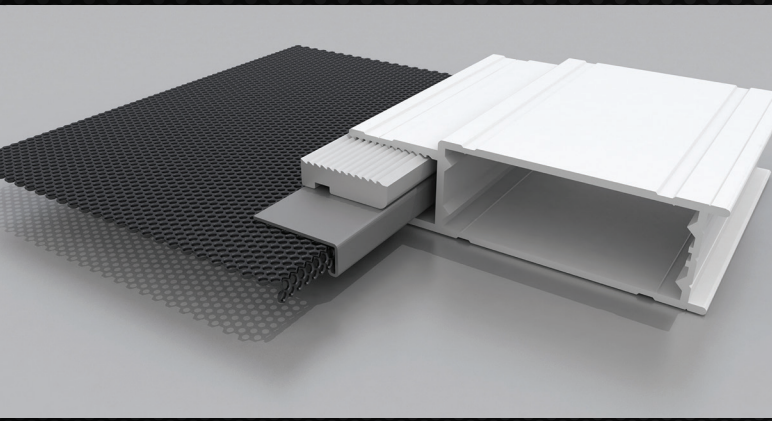


**ClearShield**  
STAINLESS STEEL SECURITY



[clearshield.com.au](http://clearshield.com.au)





## Technical Data

### Aluminium Framing

Grade:	6063 - T6
	Anodised - min 15um to AS1213-2000
Coating:	Powdercoating - Chromate Pre-treatment and powdercoated to AS3715-2002
Warranty:	As per Coating Selection

### Stainless Steel Sheet

Grade:	T304-2b Finish
Finish:	Satin Black Powder Coated
Open Area:	0.8mm - 39%-41%
Warranty:	15 Years, subject to adhering to the recommended cleaning schedule
Coating:	Powdercoating - Oxsilane Chrome Free Pre-treatment and powdercoated to AS3715-2002
Dimensions:	Domestic Grade Ø 2mm Round Holes, 60° Staggered Pitch, 3mm Spacings, <b>0.8mm Thick</b>

## Product Range

Product Name	Suitability
Ultra Strength Security Screen	Fixed Domestic and Commercial Windows, Carparks, Architectural Screening, Supplemental Security Screening, Pool Fencing, Balustrading.
Ultra Strength Security Door	Domestic and Commercial Accessways, Plant and Equipment Protection requiring airflow.
Emergency Exit Screen	Domestic and Commercial Windows requiring operable security screens, securing small points of access requiring airflow.

## Compliance – Tests Available on Request

Standard	Date	Report #	Description	Require	Result
AS4483	01/11/2010	AZT0207.10	Knife Shear - 0.8mm SS	3	60
AS5039	18/04/2011	AZT0050.11	Dynamic Impact - 0.8mm SS	5	50
AS5041	17/09/2008	2008103/3	Jemmy Test - Escape Screen	No access points to attempt test	
AS5041	19/04/2012	2012026-2	Impact/Jemmy - US Sliding Door	Passed all tests	
AS5041	18/05/2012	2012026-1	Impact/Jemmy - US Hinged Door	Passed all tests	

## Other Testing

Date	Report #	Description	SS Used	Result
03/05/2012	AZT0046.12	SHGC, Uw, Vt Test - reduced by 40%, 14% & 46% respectively	0.8mm	N/A
22/08/2012	AZT0203.12	AS5041 Impact test @ 100J at edge of screen	0.8mm	50 Impacts